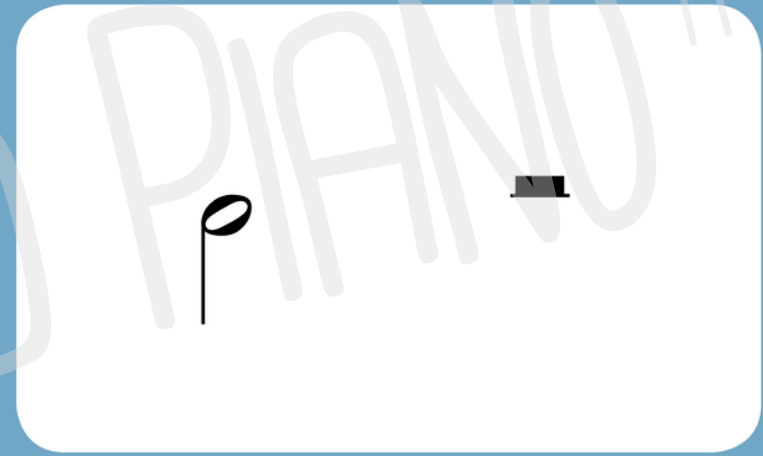




LONG-NOTE LONG-REST

BABY-LED



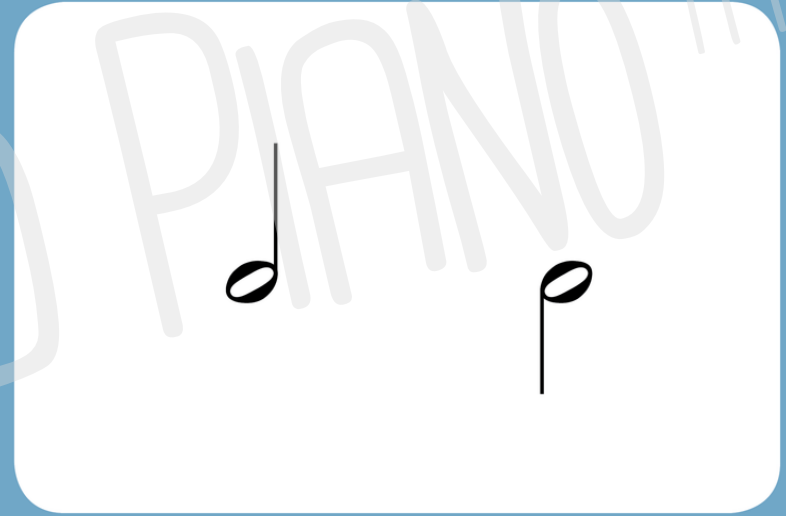
PIANO™



LONG-NOTE LONG-NOTE

BABY-LED

LONG-NOTE LONG-NOTE



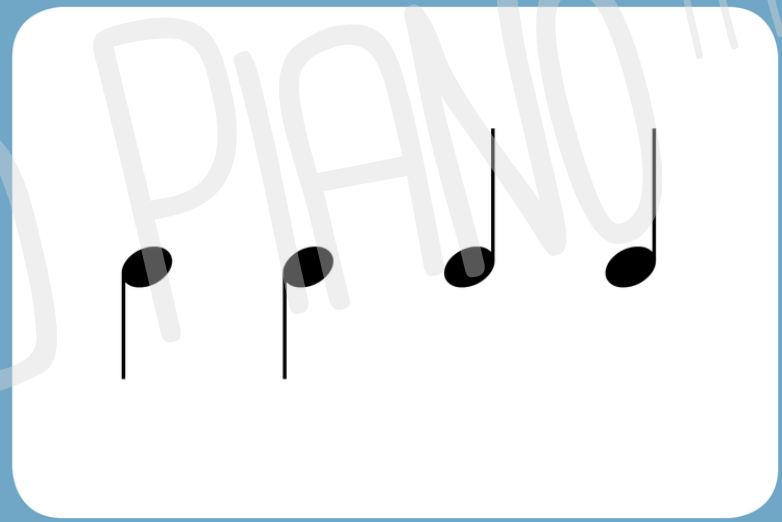
TM



SHORT SHORT SHORT SHORT

BABY-LED

SHORT SHORT SHORT SHORT

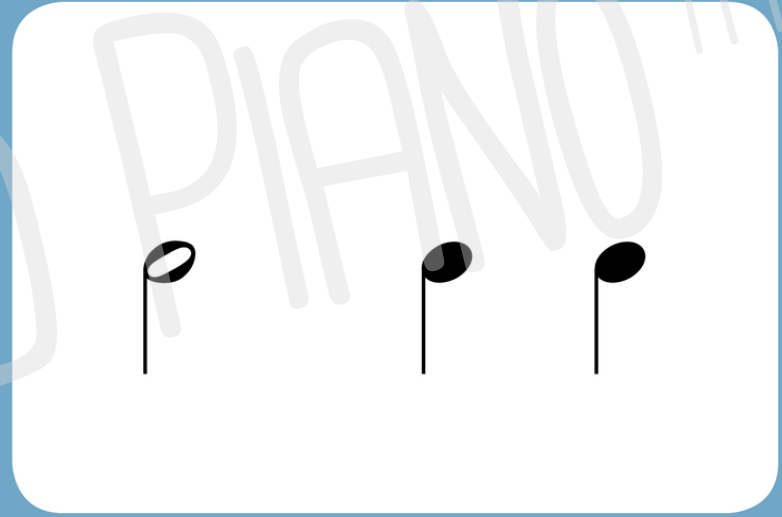




LONG-NOTE SHORT SHORT

BABY-LED

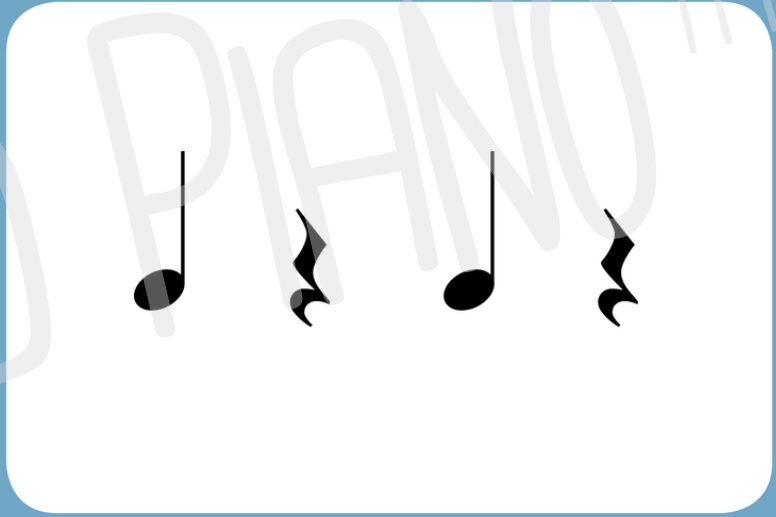
SHORT SHORT LONG-NOTE



PIANO™



SHORT REST SHORT REST





REST SHORT REST SHORT



PIANO™



SHORT LONG-NOTE SHORT

BABY-LED

SHORT LONG-NOTE SHORT



PIANO™

The musical notation consists of three notes on a white staff. The first note is a quarter note, the second is a half note, and the third is a quarter note. The notes are positioned on a line that is approximately two-thirds of the way up the staff.